

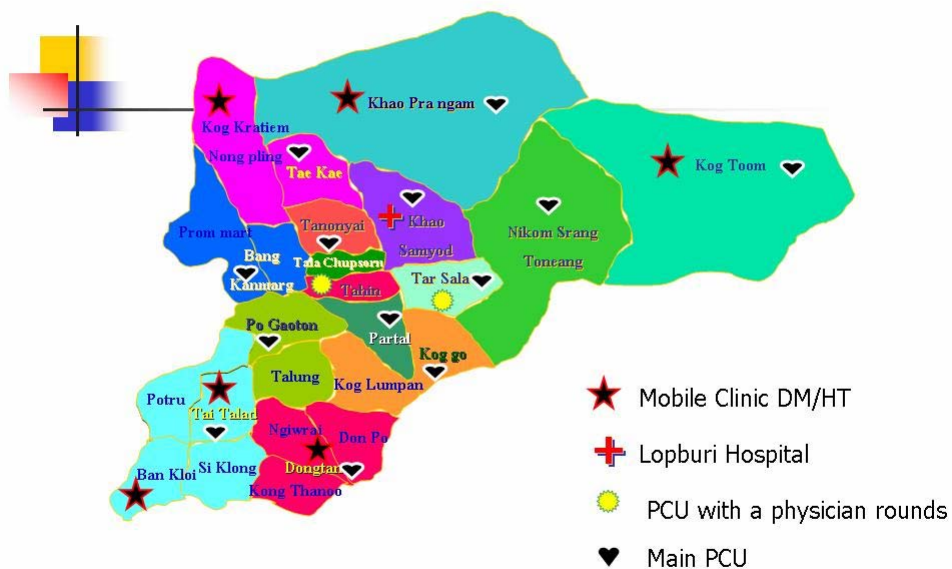


Model of Integrated Disease Management for Diabetic patients in Lopburi Hospital Contracting Unit of Primary care

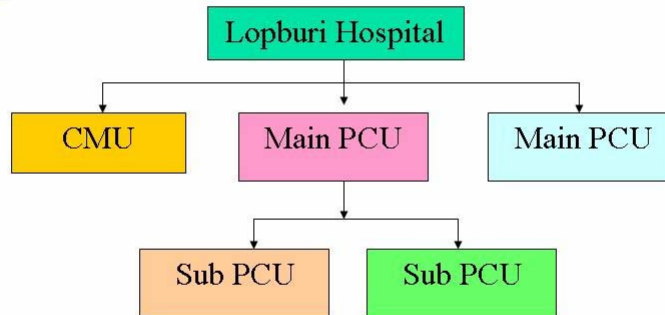
Manit M., et al.

Lopburi Hospital, Loburi Province, Thailand

Contracting Unit of Primary care of Lopburi Hospital



Flow chart of CUP's Lopburi Hospital



Note ▶ CMU and Main PCU have 10,000 populations per Tambol

▶ Sub PCU 10,000 populations per Tambol

Background



Health service management problems:

- Fragmentation of services
- Clinical practice guidelines (CPGs) were not routinely implemented
- Health care providers did not routinely discuss to improve diabetes outcomes
- Most of diabetes data were not used for improving diabetes care

Background



- Health education is not implemented systematically for self-care improvement
 - Most of diabetic patients were not referred down to general physician at primary care setting following by CPGs
-

Research question



- How is a model for diabetic patients to improve outcomes, reduce cost of care, and increase quality of life?
-

Purpose



- To produce a model of Integrated Disease Management for Diabetic patients to improve outcomes, reduce cost of care, and increase quality of life

Conceptual framework



To opinion, requirement, and problems of health service management

Disease management concept



Model of Integrated Disease Management for Diabetic patients

Research methodology



- **Qualitative study**

- **Population**
 - Diabetic patients
 - Hospital lead team
 - Multidisciplinary team
 - Subdistrict Administrative Organization

Research methodology



- **Sample**
 - Diabetic patients with type 2 diabetes who were treated at Lopburi Hospital CUP (20)
 - Hospital lead team (7)
 - Multidisciplinary team (12)
 - Subdistrict Administrative Organization(3)

Research methodology



- Instrument

- Semi-structure questionnaire

In-depth interview questionnaire

⇒ To interview all parties about their opinions, requirement, and problems of health service management followed by disease management concept to improve outcomes of diabetic care of Lopburi Hospital CUP.

Research methodology



- Collecting data

- ⇒ the in-depth interview by using disease management concept

- 20 diabetic patients with type 2 diabetes who were treated at Lopburi Hospital CUP

- a collaborative team [hospital lead team (7), multidisciplinary team (12), Subdistrict Administrative Organization(3)]

Data Analysis



Content analysis

From in-depth interview all parties about their opinions, requirement, and problems of health service management followed by disease management concept to improve outcomes of diabetic care of Lopburi Hospital CUP.

Results



- A model of Integrated Disease Management for Diabetic patients in Lopburi Hospital CUP was produced that showed ownership in Diabetic health service management ▶

Conclusions



- The model was produced between all the parties that will decrease many gaps in diabetes health services management of Lopburi Hospital CUP and to improve self management of diabetic patients
- Diabetic outcomes will be improved in the future

References



- (1) DMAA. DMAA Definition of Disease Management. 2008.
- (2) Kodner DL, Spreeuwenberg C. Integrated care: meaning, logic, applications, and implications – a discussion paper. Int J Integr Care 2002 Oct–Dec; 2(e12): 1-6.



Thank you for your attention

Home